



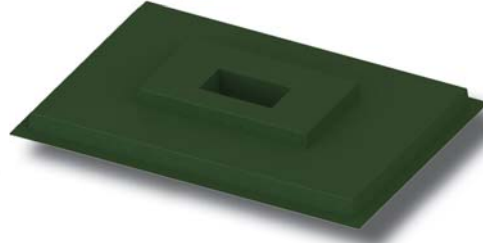
## Ground Sleeves for Traffic Equipment



GST-24-22-18-GR-17x16



GST-30-18-24-GR-24x13



GST-90-60-5-MG-20x10.5



### Features:

- These ground sleeves are produced of fire retardant resin and a combination of chopped glass spray-up and hand lay-up using 18 oz. woven roving glass reinforcement.
- The exterior is applied with a Mist Gray (Concrete Color) gel-coat, which contains UV stabilizer for superior weatherability.
- Stainless Steel floating nut inserts can be installed to match traffic control bolting patterns for an additional cost.
- The GST-90-48-5-MG-20x10.5 and GST-90-60-5 each feature a large walking surface for workers to step on and get out of the dewy grass or mud.
- Other gel-coat colors available.
- Please see our Cabinet Cross Reference Chart below. Common traffic signal cabinets are listed with the Nordic ground sleeve that will accommodate it.

Cabinet Cross Reference Chart Cabinet Type	W	D	Nordic Product	Nordic Product	L	W	H	Top Opening
330	22"	18"	GST-24-22-18-GR-17x16	GST-24-22-18-GR-17x16	24"	22"	18"	17" x 16"
332	24"	30"	GST-36-24-24-GR-22x9	GST-24-22-24-GR-17x16	24"	22"	24"	17" x 16"
334	24"	30"	GST-36-24-24-GR-22x9	GST-25-25-24-GR-12x12	25"	25"	24"	12" x 12"
337	20"	17"	GST-24-22-18-GR-17x16	GST-30-18-18-GR-24x13	30"	18"	18"	24" x 13"
345	24"	30"	GST-36-24-24-GR-22x9	GST-30-18-24-GR-24x13	30"	18"	24"	24" x 13"
333SD	44"	29"	GST-50-30-20-GR-28x22	GST-36-24-18-GR-22x9	36"	24"	18"	22" x 9"
336A	24"	20", 22"	GST-24-22-18-GR-17x16	GST-36-24-24-GR-22x9	36"	24"	24"	22" x 9"
336S	24"	20", 22"	GST-24-22-18-GR-17x16	GST-44-26-18-GR-20x12	44"	26"	18"	20" x 12"
G	25"	16"	GST-30-18-24-GR-24x13	GST-44-26-24-GR-20x12	44"	26"	24"	20" x 12"
M	30"	17"	GST-30-18-24-GR-24x13	GST-50-30-20-GR-28x22	50"	30"	20"	28" x 22"
M36	36"	17"	GST-36-24-24-GR-22x9	GST-71-26-24-GR-55x12.5	71"	26"	24"	55" x 12.5"
P38	38"	26"	GST-44-26-24-GR-20x12	GST-90-48-5-MG-20x10.5	90"	48"	5"	20" x 10.5"
P44	44"	26"	GST-44-26-24-GR-20x12	GST-90-60-5-MG-20x10.5	90"	60"	5"	20" x 10.5"
P44 Super	59"	26"	GST-71-26-24-GR-55x12.5					
R38	38"	26"	GST-44-26-24-GR-20x12					
R44	44"	26"	GST-44-26-24-GR-20x12					

Fabricators of Quality Fiberglass Products for the Electric Utility Industry  
 21415 US Highway 75 NW · P.O. Box 27 · Warren · Minnesota · 56762  
 Ph: (218) 745-5095 · Fx: (218) 745-4990 · www.nordicfiberglass.com