



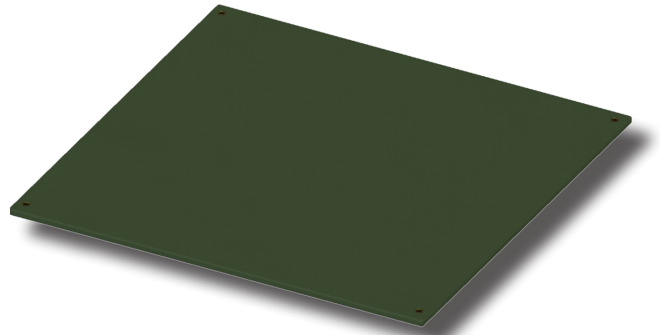
## Covers for Ground Sleeves

### Features: Standard Covers

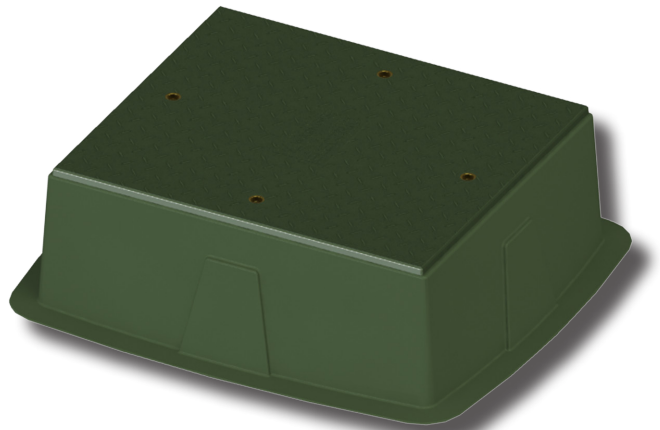
- Rust free fiberglass construction and stainless steel hardware.
- The exterior is applied with a Munsell green gel-coat (not applicable to the GSC-37-43-MG cover), which contains UV stabilizer and provides superior weather-ability and resistance to ultraviolet attack.
- The standard cover is fabricated of one layer of 1/2" plywood encapsulated in fiberglass, using fire-retardant resin and chopped glass and 18 ounce woven roving reinforcement.
- The word "ELECTRIC" can be printed on the cover for an additional charge.
- Covers are available for all box pads and ground sleeves.
- Four brass penta-head recesses are installed for securing the cover to the box pad.
- Covers come with four 3/8" x 1 1/2" stainless steel penta-head bolts.
- For larger sized covers, two layers of 1/2" plywood are standard, as are six to eight penta-head recesses and bolts.
- For retrofitting to box pads or ground sleeves that were not furnished with inserts, Nordic can provide stainless steel 3/8" and 1/2" floating nut inserts for installing the cover.

### Features: GSC-37-43-MG

- UV stabilizers are contained in the resin to provide protection from ultraviolet light attack.
- The top of the cover is a textured non-skid diamond tread surface, which provides a safe operating platform in all types of weather.
- The GSC-37-43 covers are produced by a process known as cold pressed molding.
- Molded-in penta-head cups in the cover match the CBP's & GS-37-43 Series insert patterns for installation, bolting hardware included with each cover.



Standard Cover GSC-75-72-MG



GSC-37-43-MG Cover



The word "WARNING ELECTRIC" is imprinted on every GSC-37-43 cover.



Four brass penta-head recesses are installed for securing the cover to the box pad. For larger covers, six to eight penta-head recesses and bolts are installed.