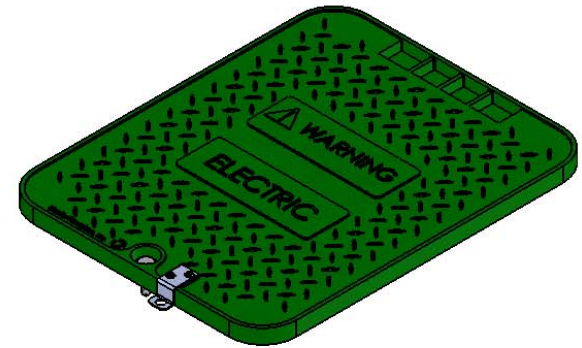
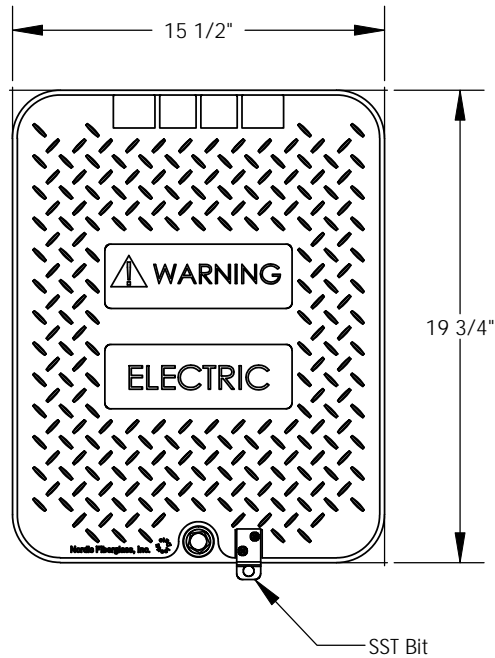
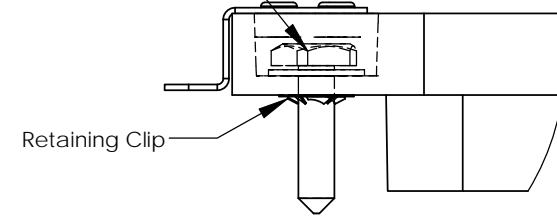


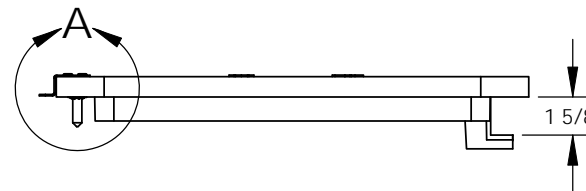
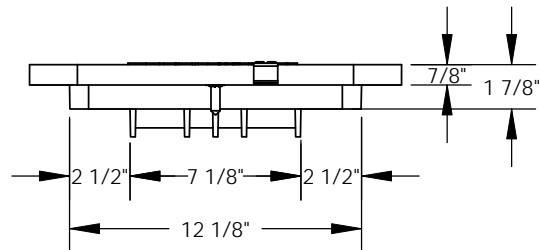
REVISIONS			
REV.	DESCRIPTION	DATE	APPROVED
REL-01		6/19/2006	
REL-02	Updated Cover to Injection Molded	12/1/2009	R.L.J.



3/8-16 SST Pentahead Bolt



DETAIL A
SCALE 1 : 2



Nordic Fiberglass, Inc.

21415 US Hwy 75 NW, Warren, MN 56762
www.nordicfiberglass.com
218-745-5095 ph. --- 218-745-4990 fax

HHC2-1619-MG

PROPRIETARY AND CONFIDENTIAL
THE INFORMATION CONTAINED IN THIS DRAWING IS THE SOLE PROPERTY OF NORDIC FIBERGLASS, INC. ANY REPRODUCTION IN PART OR AS A WHOLE WITHOUT THE WRITTEN PERMISSION OF NORDIC FIBERGLASS, INC. IS PROHIBITED.

Customer Name: N/A		
DIMENSIONS ARE IN INCHES TOLERANCES: ANGLES $\pm 1^\circ$ FRACTIONAL $\pm 1/2$ ONE PLACE DECIMAL $\pm .060$ TWO PLACE DECIMAL $\pm .030$ THREE PLACE DECIMAL $\pm .015$		
MATERIAL		
	NAME	DATE
DRAWN	R.L.J.	12/01/09
CHECKED	---	--/--/---

SIZE	ITEM ID:	REV.
A	03513.98	REL-02
SCALE:1:8		SHEET 1 OF 1